

Technical Newsletter

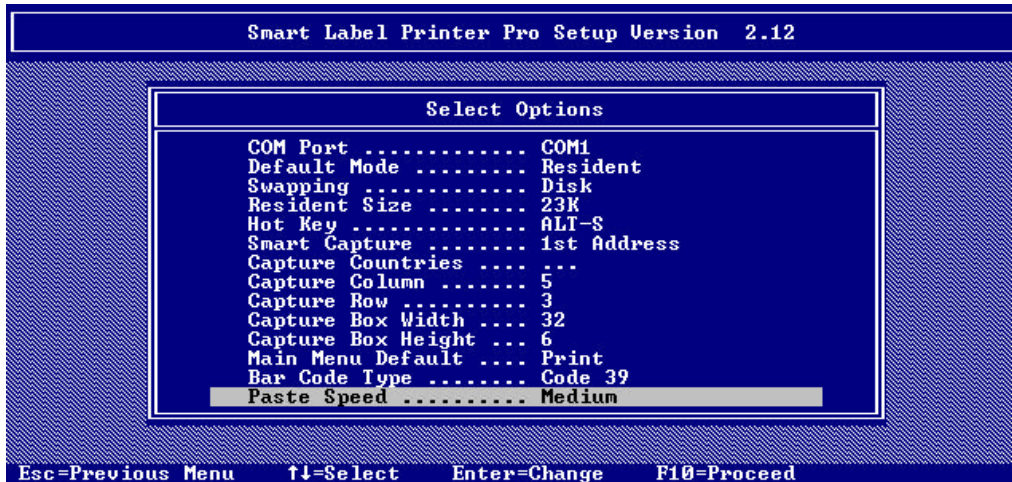
Installing the Smart Label Printer **SLP 100/200/220/240**



Installing the SLP

Required is the **SLP 2.12** DOS driver! The SLP 100/200/240 also requires **SLP9600.exe** to set the baud rate to 9600 for the printer. The software is available on request.

1. Before installing the SLP software install Harbil or Prisma Dos first!
2. Install the SLP 2.12 DOS driver (SLP on COM1*) and follow the instructions
3. Set in the *Change Configuration Options* the *Resident Size* to 23K (Picture 1).
If you have the SLP220 skip point 4 / 5 and proceed with Number 6.
4. Copy the SLP9600.exe into the C:\SLPPRO directory.
5. Insert the following line in the AUTOEXEC.BAT before C:\SLPPRO\SLPPRO.EXE
/r
C:\SLPPRO\SLP9600 COM1
6. Reboot your PC and select the correct printer in the Harbil/Prisma software (file slp2).
7. When you can't select SLP2 in the HARBIL software please contact your Sales Manager at Fluid Management.



Picture 1

Important
 Turning the printer off will set the printer to his default Baute Rate 57800!

Set the label size for the SLP100

*** Note:**

To use COM ports other than COM1 or COM2 one has to give the I/O port address as parameter to LP9600.EXE.

Example:

COM3 on I/O port 03E8 (hexadecimal) =
 SLP9600 0x03E8

Special for the SLP100 you must configure a different label.

1. Activate the SLP software with the Hot Key **ALT-S**.
2. Select *Options/Label* and set **Label Size. . . Shipping**.
3. Select *Format/Change* and change the following values
Top/Bottom Margin . . Flush Top
Left/Right Margin . . Aligned, Centered
4. Select *Save* and exit the SLP software.
5. Reboot your PC

For more information please contact our Service Department at:

Telephone: 0031-(0)252 240 842

Fax: 0031-(0)252 240 882

E-mail: SERVICE@FLUIDMAN.NL